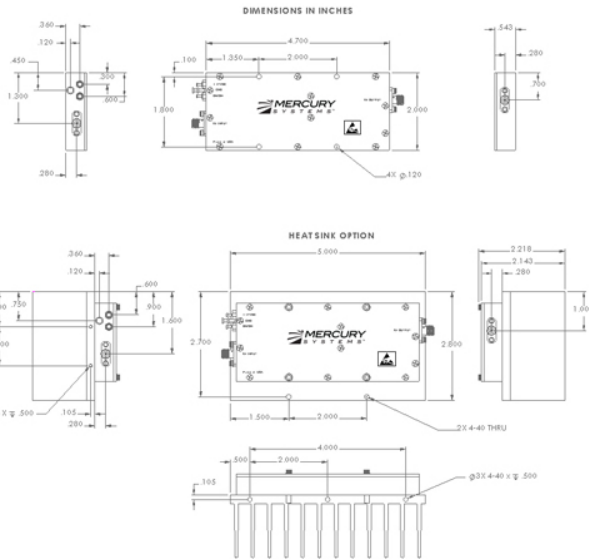


SM4450-37

4400 MHz to 5000 MHz

POWER AMPLIFIERS



Specifications

	Min	Typ	Max	Unit
RF Frequency	4400		5000	MHz
Linear Power Output		33		dBm
P1dB Power Output	37	38		dBm
Linear Gain		38 ±1		dB
Gain Flatness Over Band		±1		dB
Gain Change Over Temp		±1		dB
Third Order Intercept (OIP3)		47		
Input Return Loss			-16	dB

Operating Characteristics

	Min	Typ	Max	Unit
Supply Voltage	11	12	13	VDC
Operating Current Draw		2.8	3	A

Pin Table

Pin	Value	Description
-----	-------	-------------

Notes

Featured and Options

- Options:
 TTL on/off
 Fan
 Heatsink
 Features:

Environmental Ratings

	Min	Typ	Max	Unit
Storage Temperature	-40		85	°C
Operating Temperature	-20		85	°C
Automatic Shut Off Temp		90		°C
Operating Humidity		95%		
Operating Altitude		30000		Ft

Connectivity

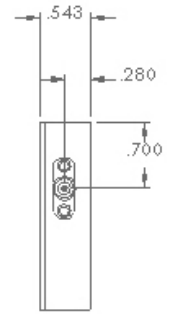
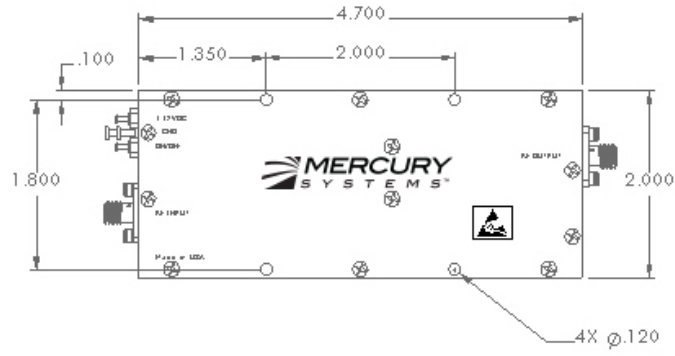
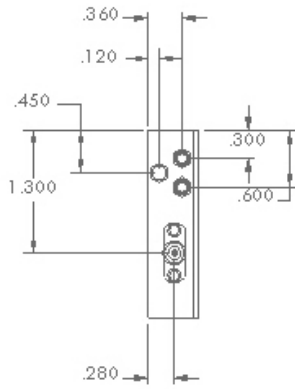
RF Input Connector	SMA F
RF Output Connector	SMA F
Control/Monitoring Connector	Feedthrough Pins



Microwave RF Components | Hudson, NH | (603) 546-4100 | rf.mrcy.com
Specifications subject to change without notice

[Request a Quote](#) | [Ask an Engineer](#)  

DIMENSIONS IN INCHES



HEAT SINK OPTION

