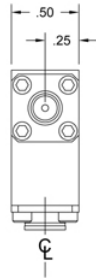
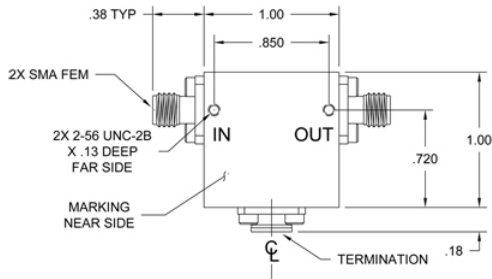


SPEC SHEET

# T-001S40

## 1.8 GHz to 1.88 GHz

Communication Band Coaxial ISOLATORS & CIRCULATORS



### Specifications

RF Frequency	1.8 GHz to 1.88 GHz
Isolation	23 dB (min)
Insertion Loss	0.3 dB (max)
VSWR	1.2:1
Peak Power	1000 Watts (max)
Average Power	75 Watts (max)
Power Forward	75 Watts
Power Reverse	10 Watts
Package Size	1.00 x 1.00 x 0.50"

### Environmental

Operating Temperature	-30 to 75 °C
-----------------------	--------------

### Notes



Microwave RF Components | Manteca, CAL | 1-209-825-3977 | [rf.mrcy.com](http://rf.mrcy.com)  
 Specifications subject to change without notice

